

**CATOLOGO PARTI DI RICAMBIO FRESATRICE SERIE V1/F1**

**CATALOGUE PIECES DE RECHANGE POUR FRAISEUSE SERIE V1/F1**

**V1/F1 SERIES ROTARY CULTIVATOR SPARE PARTS CATALOGUE**

**ERSATZTEILEKATALOG FRAESMASCHINE SERIE V1/F1**

**CATÁLOGO DE PIEZAS DE REPUESTO CULTIVADORA ROTATIVA SERIA V1/F1**

---

SICUREZZA E GARANZIA SOLO CON I RICAMBI ORIGINALI TORTELLA

SÉCURITÉ ET GARANTIE SEULEMENT AVEC DES PIÈCES D'ORIGINE TORTELLA

SAFETY AND DEPENDABILITY WITH GENUINE TORTELLA SPARE-PARTS ONLY

SICHERHEIT UND GARANTIE HABEN SIE NUR MIT ORIGINAL - TORTELLA - ERSATZTEILEN

SEGURIDAD Y GARANTIA SÓLO CON REPUESTOS ORIGINALES TORTELLA

---



INDUSTRIA MECCANICA F.LLI TORTELLA S.p.A  
Via Civiltà del Lavoro, 77 66026 Ortona (CH) ITALY  
tel. 085•9061788 • fax 085•9062404 • telex 600095 TORT I  
Internet E-Mail: [tortella@rgn.it](mailto:tortella@rgn.it)

**I****NORME PER LE ORDINAZIONI**

Le **Ordinazioni di parti di ricambio** devono essere corredate dalle seguenti indicazioni:

- Serie dell'attrezzo
- Modello
- Codice
- Anno di fabbricazione
- Numero di ordinazione della parte che si richiede (*come indicato nelle tavole e negli elenchi parti di ricambio*), in base al quale vengono evase le ordinazioni,

Inviare gli ordini a:

**TORTELLA S.p.A.**  
VIA CIVILTÀ DEL LAVORO 77  
66026 ORTONA (CHIETI) - Italy  
E-MAIL: [info@tortella.com](mailto:info@tortella.com)  
Tel.085/906981

**F****COMMANDE DE PIÈCES DÉTACHÉES**

Les **commandes** doivent nous parvenir complètes des indications suivantes:

- Serie de l'outil
- Modele
- Code
- An de fabrication
- Numéro de commande de la pièce requise (*comme indiqué sur les planches et aux listes des pièces*), d'après lequel les commandes sont expédiées.

Envoyer la commande a:

**TORTELLA S.p.A.**  
VIA CIVILTÀ DEL LAVORO 77  
66026 ORTONA (CHIETI) - Italy  
E-MAIL: [info@tortella.com](mailto:info@tortella.com)  
Tel.085/906981

**GB****ORDERING PARTS**

**Orders for spare parts** must include the following data:

- Tool series
- Model
- Code
- Year of fabrication
- Part number of the ordered spare, as given on plates and lists, that will be used to fill the order

Please send the order to:

**TORTELLA S.p.A.**  
VIA CIVILTÀ DEL LAVORO 77  
66026 ORTONA (CHIETI) - Italy  
E-MAIL: [info@tortella.com](mailto:info@tortella.com)  
Tel.085/906981

INDUSTRIA

MECCANICA

F.LLI

**TORTELLA**

S.p.A.

VANGATRICI — FRESATRICI

|        |                      |          |                      |
|--------|----------------------|----------|----------------------|
| SERIE  | <input type="text"/> | MOD.     | <input type="text"/> |
| CODICE | <input type="text"/> | MATR.    | <input type="text"/> |
| ANNO   | <input type="text"/> | PESO KG. | <input type="text"/> |

MADE IN ITALY

**D****ANWEISUNGEN ZUR BESTELLUNG**

Bei **Bestellung** bitten wir stets folgendes anzugeben:

- Serie des geraets
- Modell
- Kode
- Fabrikationsjahr
- Bestellnummer des gewünschten Ersatzteils (*It. Bildtafeln u. Listen*), auf Grund derer die Lieferung erfolgt

Adressieren die bestellung zu:

**TORTELLA S.p.A.**  
VIA CIVILTÀ DEL LAVORO 77  
66026 ORTONA (CHIETI) - Italy  
E-MAIL: [info@tortella.com](mailto:info@tortella.com)  
Tel.085/906981

**E****PEDIDOS DE REPUESTOS**

**En todos los pedidos** de piezas de repuesto tienen que consignarse los datos siguientes:

- Serie del equipo
- Modelo
- Año de fabricación
- Código
- Número de pedido de la pieza requerida (*el que coincidirá con el resenado en las listas de piezas de repuesto y las láminas*), en base al cual se evacua el pedido

Expedir los pedidos.

**TORTELLA S.p.A.**  
VIA CIVILTÀ DEL LAVORO 77  
66026 ORTONA (CHIETI) - Italy  
E-MAIL: [info@tortella.com](mailto:info@tortella.com)  
Tel.085/906981

**I****RICERCA DELLE PARTI DI RICAMBIO**

Le parti di ricambio illustrate sono contraddistinte dal **n. di ordinazione** con a fianco tutte le indicazioni (*modifiche, ecc.*) sufficienti in generale per poter individuare le parti stesse direttamente sulle tavole.

Indicazioni e abbreviazioni usate nelle tavole:

- 2251958 = parte di normale fornitura  
 2490890-4105000 = parti fornite in alternativa  
**1441000** = complessivo  
 2251955 P.143 = complessivo le cui parti sono illustrate nella pag. 143  
 1453090 P.143-144 = complessivo le cui parti sono indicate nelle pagine 143-144.

**s** = parte sinistra (\*)  
**d** = parte destra (\*)

(\*) Rispetto alla direzione di marcia dell'attrezzo.

**F****RECHERCHE DES PIÈCES DÉTACHÉES**

Les pièces représentées sont repérées par le **n. de commande** accompagné de toutes les indications (*modifications, codes, etc.*), suffisant en général à repérer les pièces elles-mêmes directement sur les planches.

Symboles et abréviations utilisés sur les planches:

- 2251958 = pièce de fourniture standard  
 2490890-4105000 = pièces livrées en alternative  
**1441000** = ensemble  
 2251955 P.143 = ensemble dont les pièces figurent à la page 143  
 1453090 P.143-144 = ensemble dont les pièces figurent à la pages 143-144.

**s** = pièce gauche (\*)  
**d** = pièce droite (\*)

(\*) Par rapport à la direction de marche de l'outil

**GB****HOW TO LOCATE SPARES**

The spare parts illustrated are identified by respective **part numbers** together with other indications (*modifications, codes, etc.*), generally sufficient for direct location of parts on plate.

Indications and abbreviations used in the plates:

- 2251958 = standard supply part  
 2490890-4105000 = parts supplied as an alternative  
**1441000** = assembly  
 2251955 P.143 = assembly whose separate components are shown in page 143  
 1453090 P.143-144 = assembly whose separate components are shown in page 143-144.

**s** = left (\*)  
**d** = right (\*)

(\*) With respect to running direction of the tool

**Sicurezza e garanzia solo  
 con i ricambi originali TORTELLA**

**Sécurité et garantie seulement  
 avec des pièces d'origine TORTELLA**

**Safety and dependability with  
 genuine TORTELLA spare-parts only**

**Sicherheit und Garantie haben Sie nur  
 mit Original - TORTELLA - Ersatzteilen**

**Seguridad y garantía sólo  
 con repuestos originales TORTELLA**

**D****AUFFINDEN DER ERSATZTEILE**

Die abgebildeten Ersatzteile sind mit den **Bestellnummern** und sämtlichen Angaben versehen (*Änderungen, Kennnummern usw.*), die im allgemeinen ausreichen, um die gewünschten Teile direkt auf den Bildtafeln zu ermitteln.

Erläuterungen und Abkürzungen auf den Bildtafeln:

- 2251958 = normalerweise gelieferter Teil  
 2490890-4105000 = abwechselnd gelieferter Teil  
**1441000** = Zusammenbau  
 2251955 P.143 = Zusammenbau, dessen Einzelteile in seite 143 abgebildet sind  
 1453090 P.143-144 = Zusammenbau, dessen Einzelteile in seiten 143-144 abgebildet sind.

**s** = links (\*)  
**d** = rechts (\*)

(\*) Gegenüber der fahrriichtung des geräts

**E****CÓMO SE BUSCAN LAS PIEZAS DE REPUESTO**

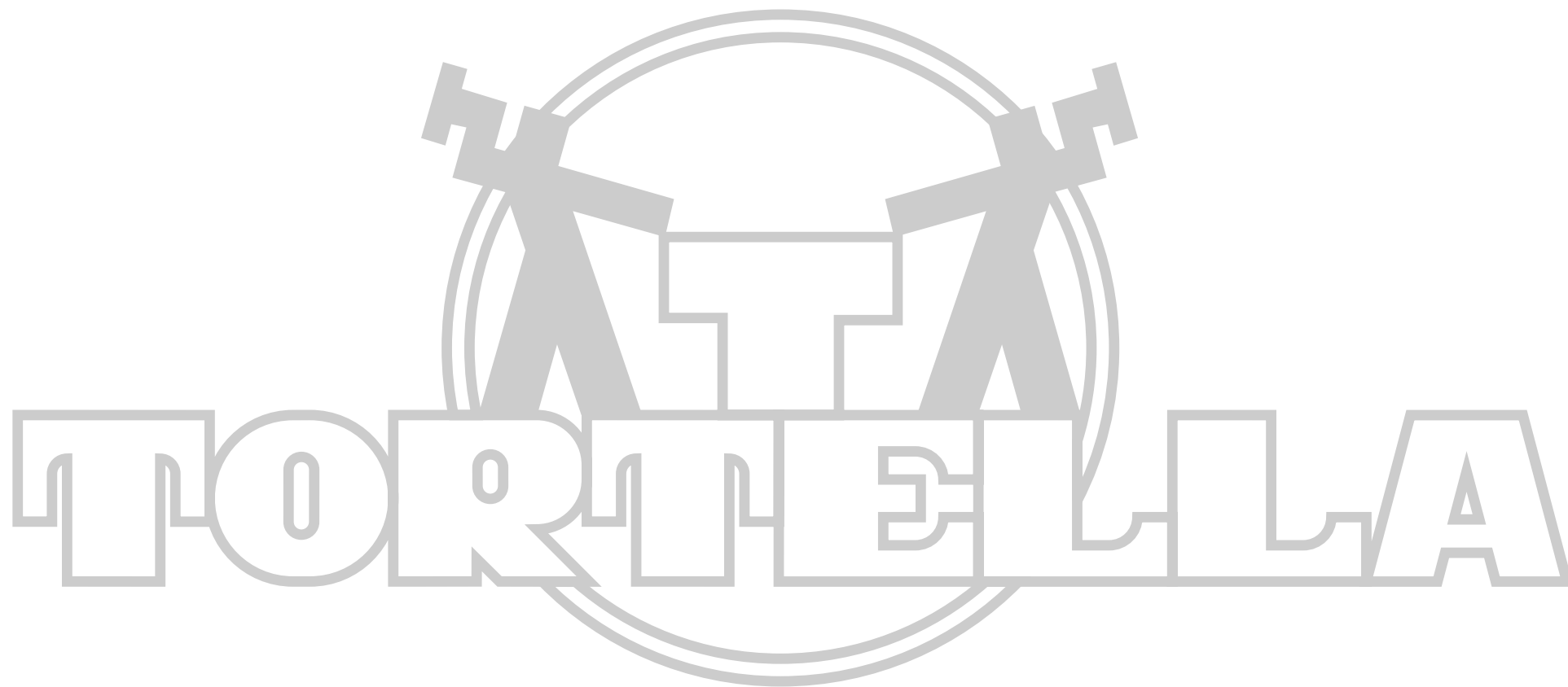
Cada pieza de recambio representada lleva el **número de pedido** acompañado de todas las indicaciones (*modificaciones, códigos, etc.*) que generalmente son suficientes para reconocer las mismas pieza en la lámina.

Notaciones y abreviaturas usadas en las láminas:

- 2251958 = pieza de suministro normal  
 2490890-4105000 = piezas de suministro alternativo  
**1441000** = conjunto  
 2251955 P.143 = conjunto cuyo despiece se ilustra en la pag. 143  
 1453090 P.143-144 = conjunto cuyo despiece se ilustra en las pag. 143-144.

**s** = parte izquierda (\*)  
**d** = parte derecha (\*)

(\*) Respecto de la dirección de marcha del equipo

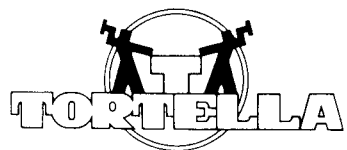
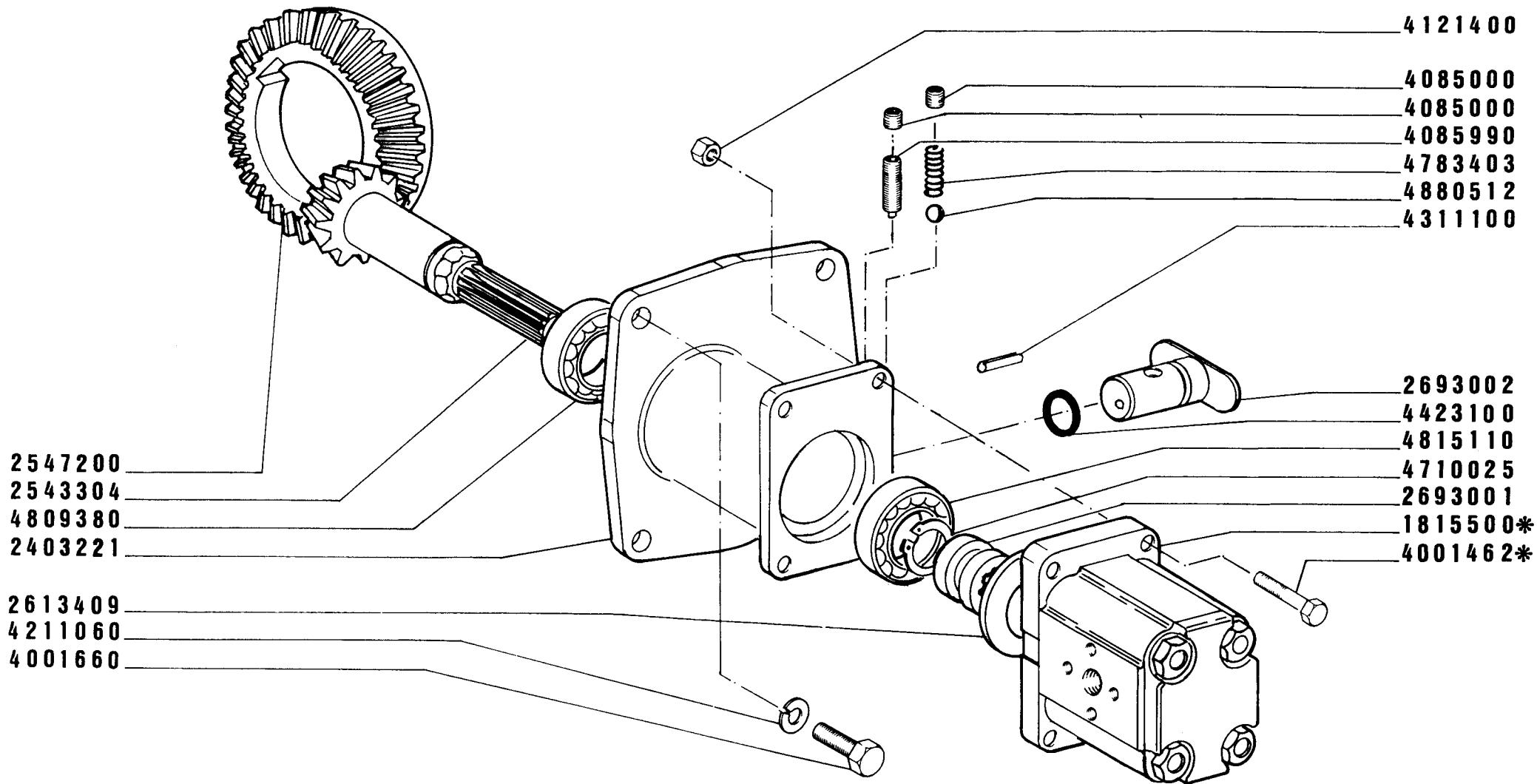


# catalogo ricambi fresatrici

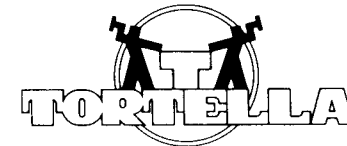
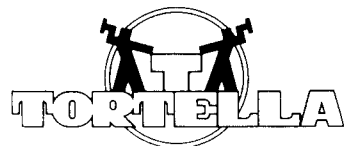
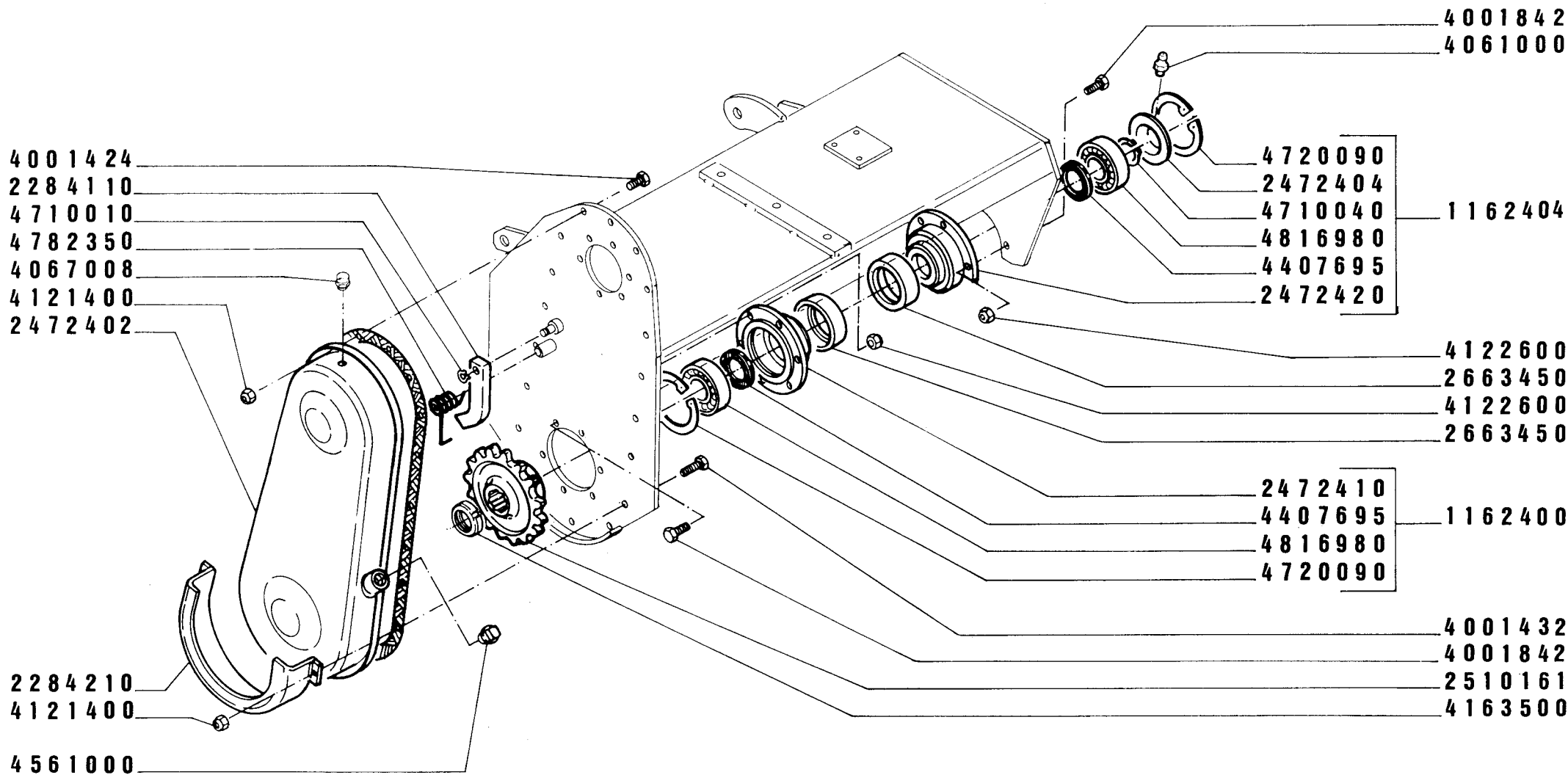
serie: V1-F1

potenze: hp 20-45

kw: 15-33



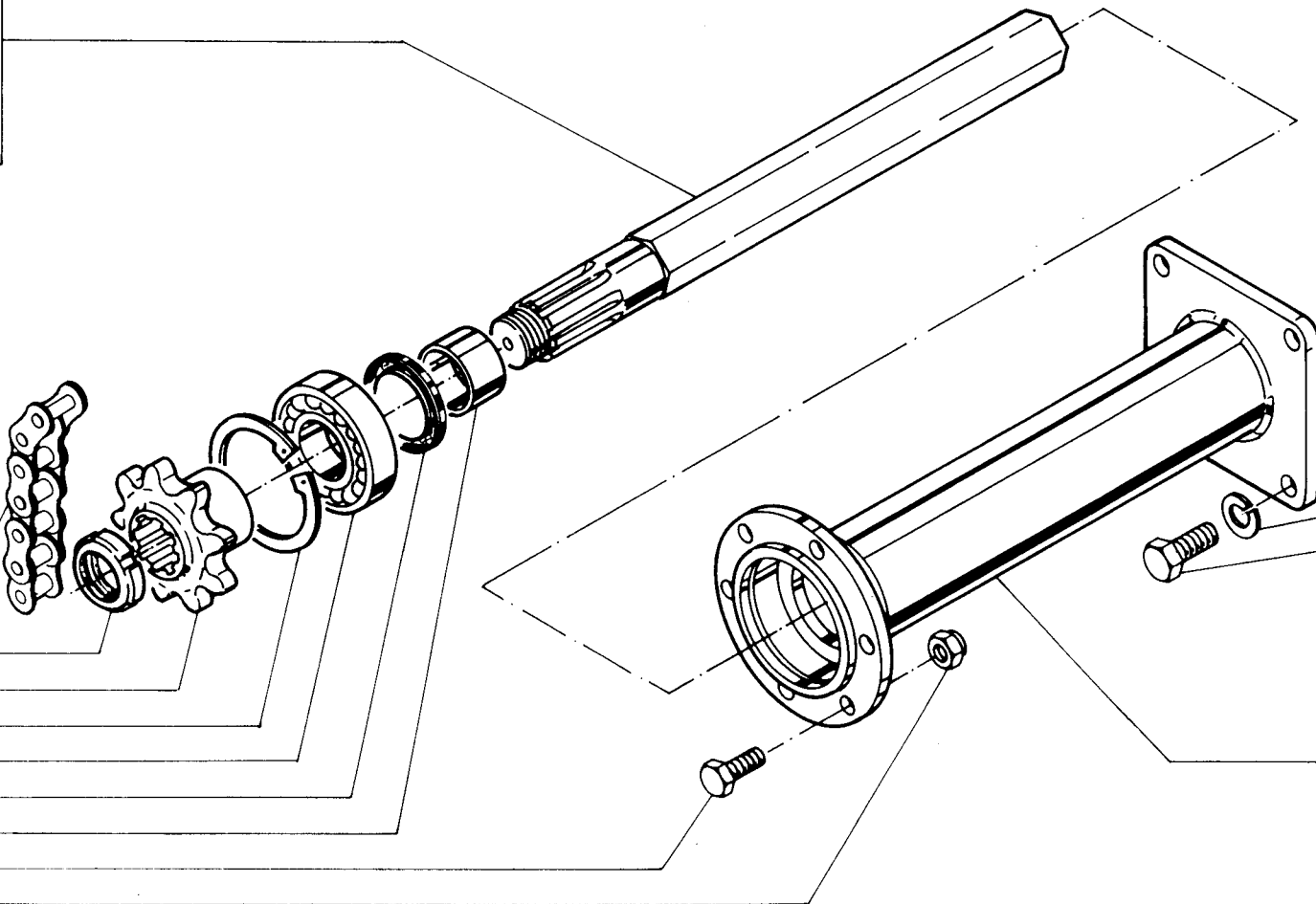
|                       |          |             |                |  |                         |
|-----------------------|----------|-------------|----------------|--|-------------------------|
| SERIE<br><b>V1-F1</b> | COD.<br> | MODELLI<br> | SUPPORTO POMPA |  | PAGINA N°<br><b>354</b> |
|-----------------------|----------|-------------|----------------|--|-------------------------|



|  |             |                |  |  |                                    |
|--|-------------|----------------|--|--|------------------------------------|
| <p>SERIE</p> <p><b>S1·V1·F1·T2</b></p> | <p>COD.</p> | <p>MODELLI</p> |  |  | <p>PAGINA N°</p> <p><b>197</b></p> |
|--|-------------|----------------|--|--|------------------------------------|

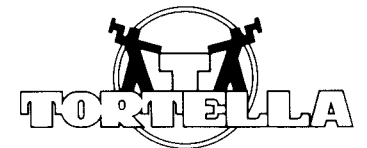
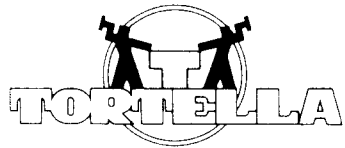
- 2465519 V1 110
- 2465521 V1 120
- 2465523 V1 130
- 2465528 V1 140
- 2461401 V1 150
- 2461403 V1 160
- 2465531 F1 TUTTI

- 4901200
- 4163500
- 2510091
- 4720090
- 4816980
- 4407690
- 2612400
- 4001842
- 4122600



- 4211100
- 4002026

- |          |         |
|----------|---------|
| V1 110   | 2325208 |
| V1 120   | 2325210 |
| V1 130   | 2325212 |
| V1 140   | 2325214 |
| V1 150   | 2325215 |
| V1 160   | 2325217 |
| F1 TUTTI | 2325230 |



|              |             |                |                          |                  |
|--------------|-------------|----------------|--------------------------|------------------|
| <b>SERIE</b> | <b>COD.</b> | <b>MODELLI</b> | <b>TUBO FLANGIATO SX</b> | <b>PAGINA N°</b> |
| <b>V1-F1</b> |             |                |                          | <b>374</b>       |

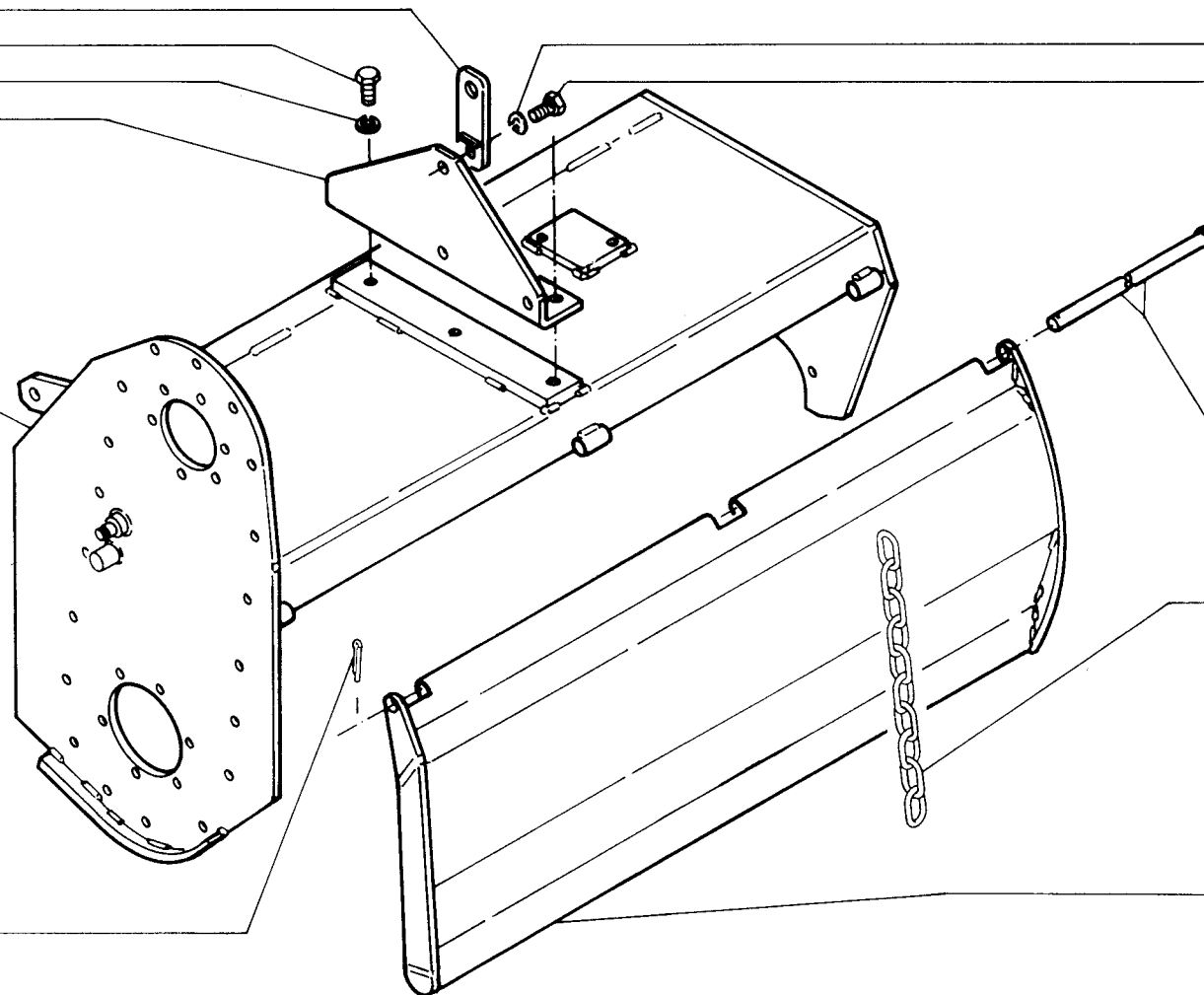


2286129  
 4002018  
 4211100  
 2285730

4211100  
 4002026

2310202 V1-F1 110  
 2310204 V1-F1 120  
 2310206 V1-F1 130  
 2310208 V1-F1 140  
 2310209 V1-F1 150  
 2310211 V1-F1 160

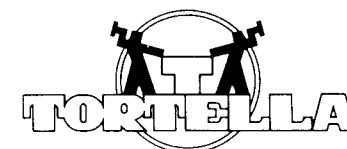
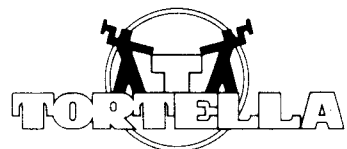
V1-F1 110 2284164  
 V1-F1 120 2284166  
 V1-F1 130 2284168  
 V1-F1 140 2284170  
 V1-F1 150 2284172  
 V1-F1 160 2284174



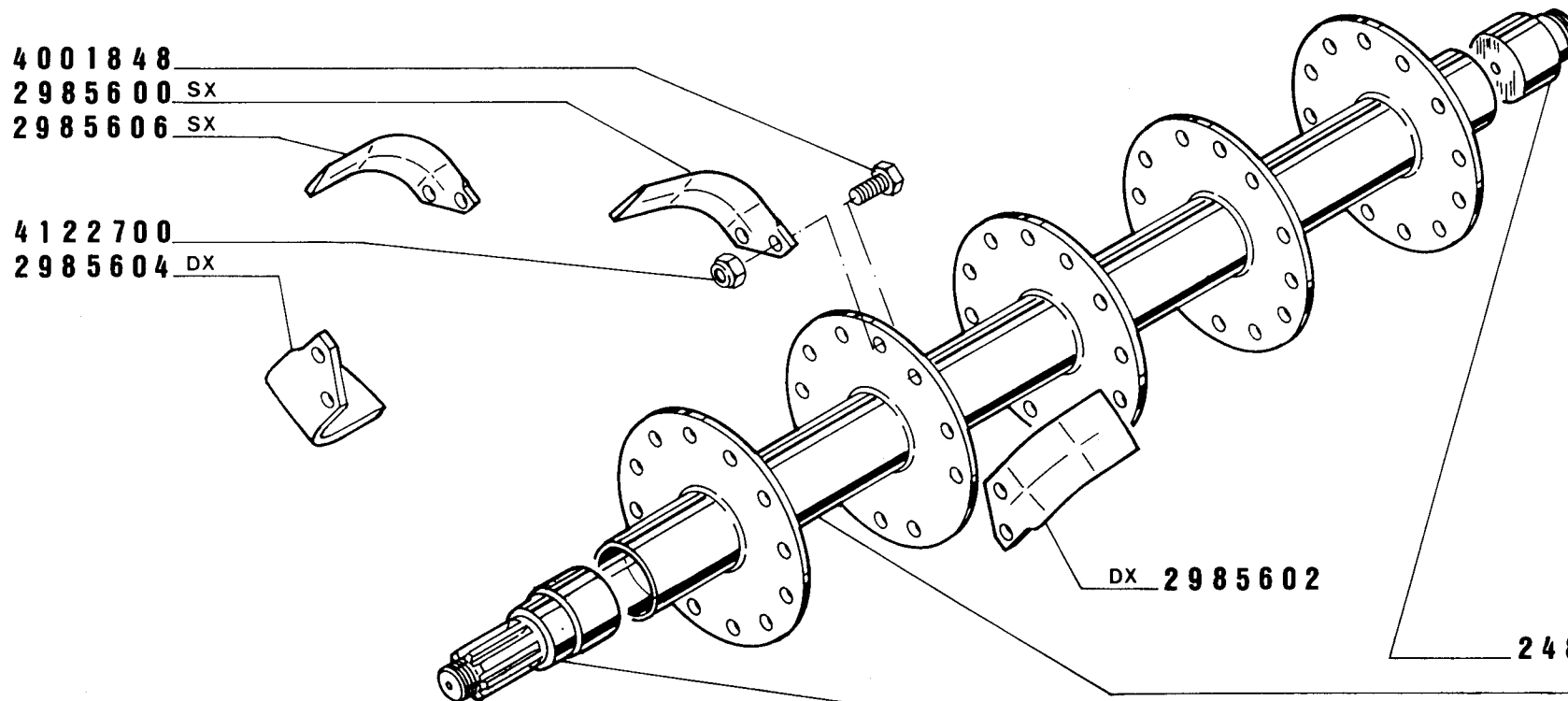
4391000

4317340

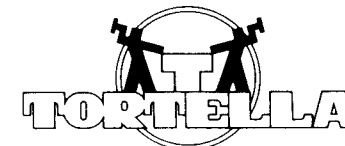
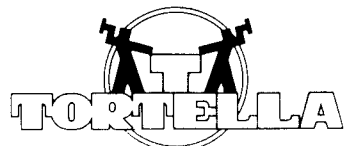
V1-F1 110 2226002  
 V1-F1 120 2226004  
 V1-F1 130 2226006  
 V1-F1 140 2226008  
 V1-F1 150 2226009  
 V1-F1 160 2226012



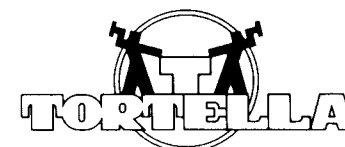
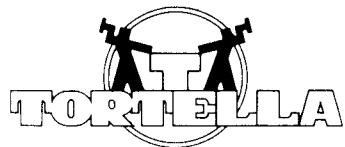
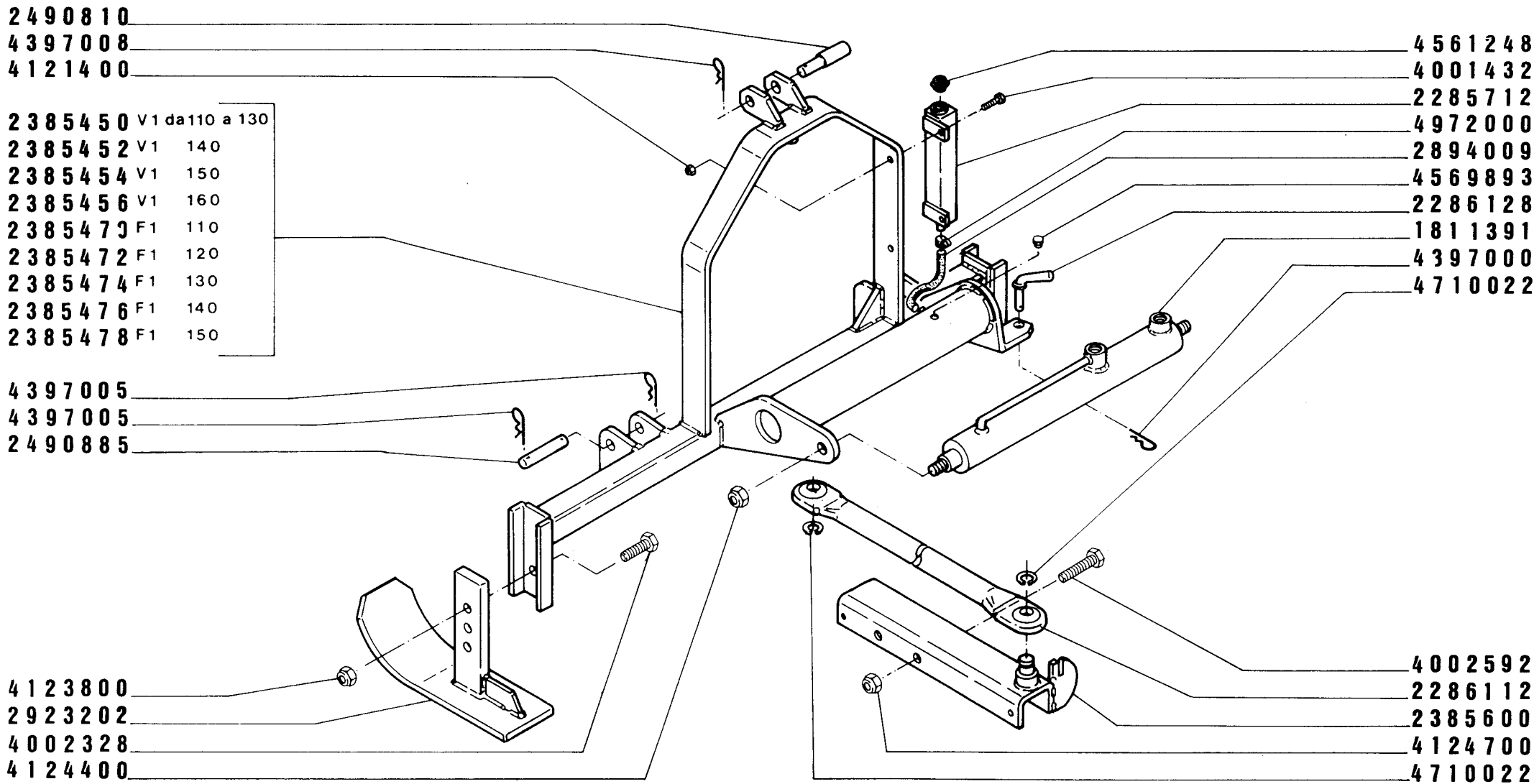
|                       |      |                  |                  |                         |
|-----------------------|------|------------------|------------------|-------------------------|
| SERIE<br><b>V1-F1</b> | COD. | MODELLI<br>TUTTI | CAPPOTTA E PORTA | PAGINA N°<br><b>506</b> |
|-----------------------|------|------------------|------------------|-------------------------|



|         |           |         |
|---------|-----------|---------|
| 2481000 | V1-F1 110 | 2321298 |
|         | V1-F1 120 | 2321300 |
| 2481005 | V1-F1 130 | 2321302 |
|         | V1-F1 140 | 2321304 |
|         | V1-F1 150 | 2321305 |
|         | V1-F1 160 | 2321307 |



|               |      |         |  |  |  |  |           |
|---------------|------|---------|--|--|--|--|-----------|
| SERIE         | COD. | MODELLI |  |  |  |  | PAGINA N° |
| V1-F1         |      |         |  |  |  |  | 375       |
| <b>ROTORE</b> |      |         |  |  |  |  |           |



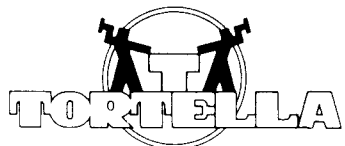
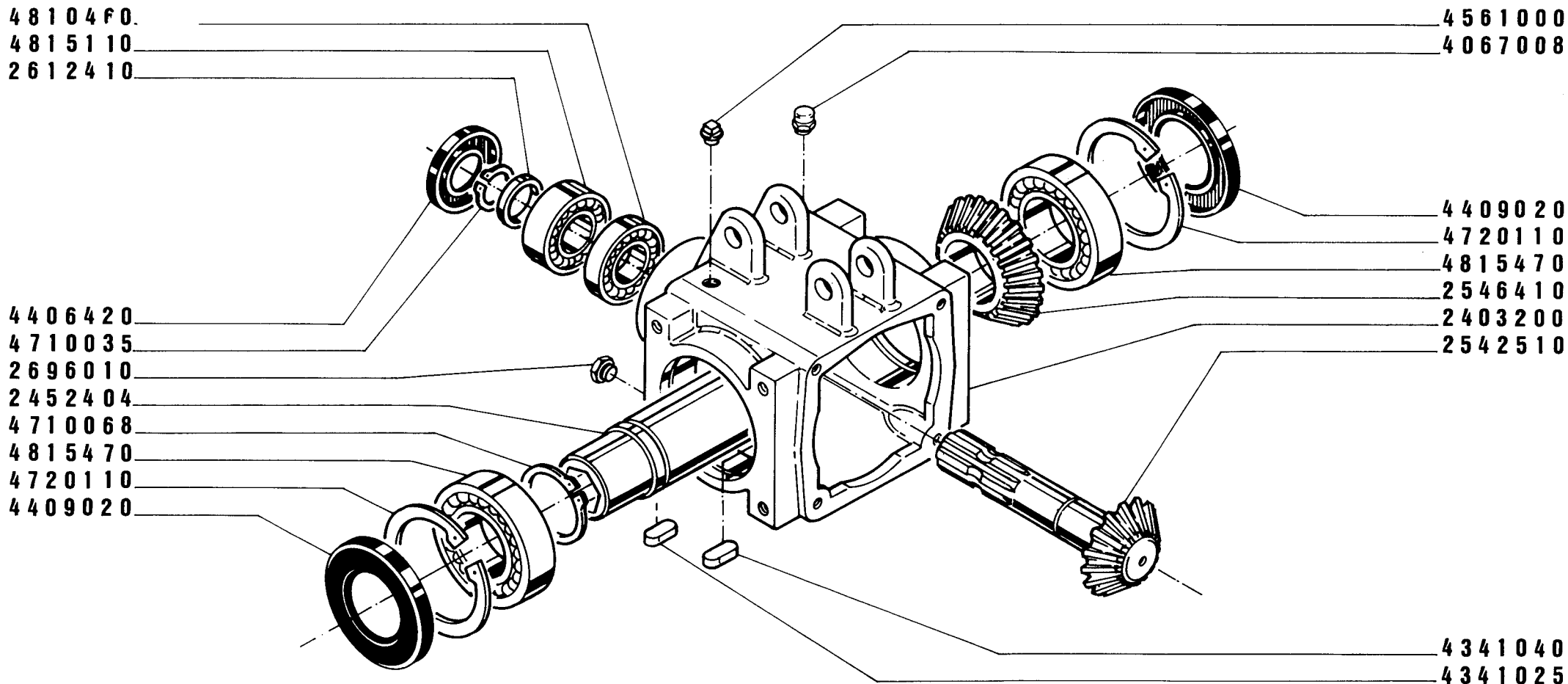
SERIE  
**V1-F1**

COD.

| MODELLI |  |  |
|---------|--|--|
| TUTTI   |  |  |
|         |  |  |
|         |  |  |

**CORPO SCORREVOLE**

PAGINA N°  
**507**



PAG. 345 E 354 1442511 ESCLUSO\*



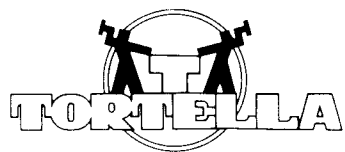
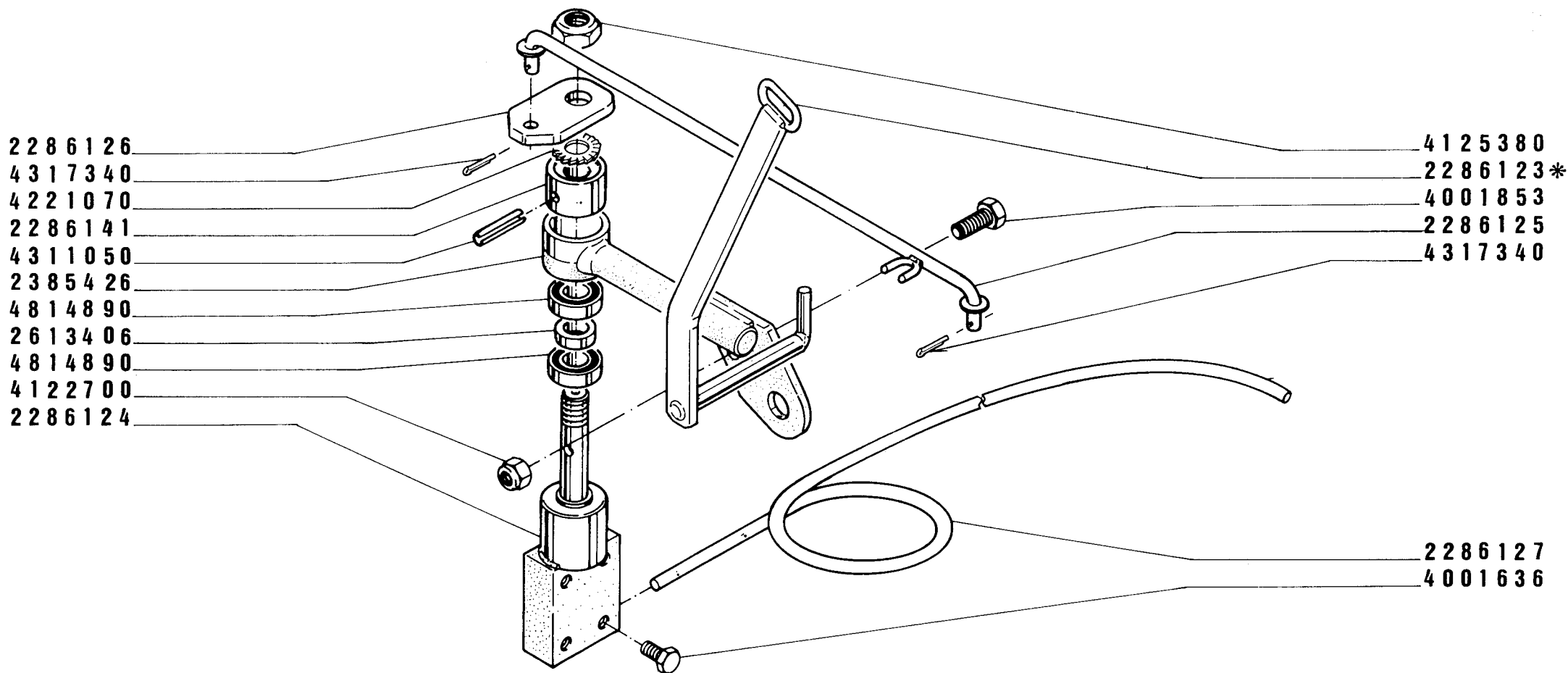
SERIE  
**V1-F1**

COD.

|         |  |  |  |
|---------|--|--|--|
| MODELLI |  |  |  |
| TUTTI   |  |  |  |
|         |  |  |  |
|         |  |  |  |

**RIDUTTORE**

PAGINA N°  
**345**



1995401 PAG. 513 ESCLUSO\*



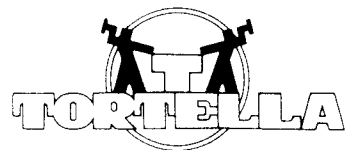
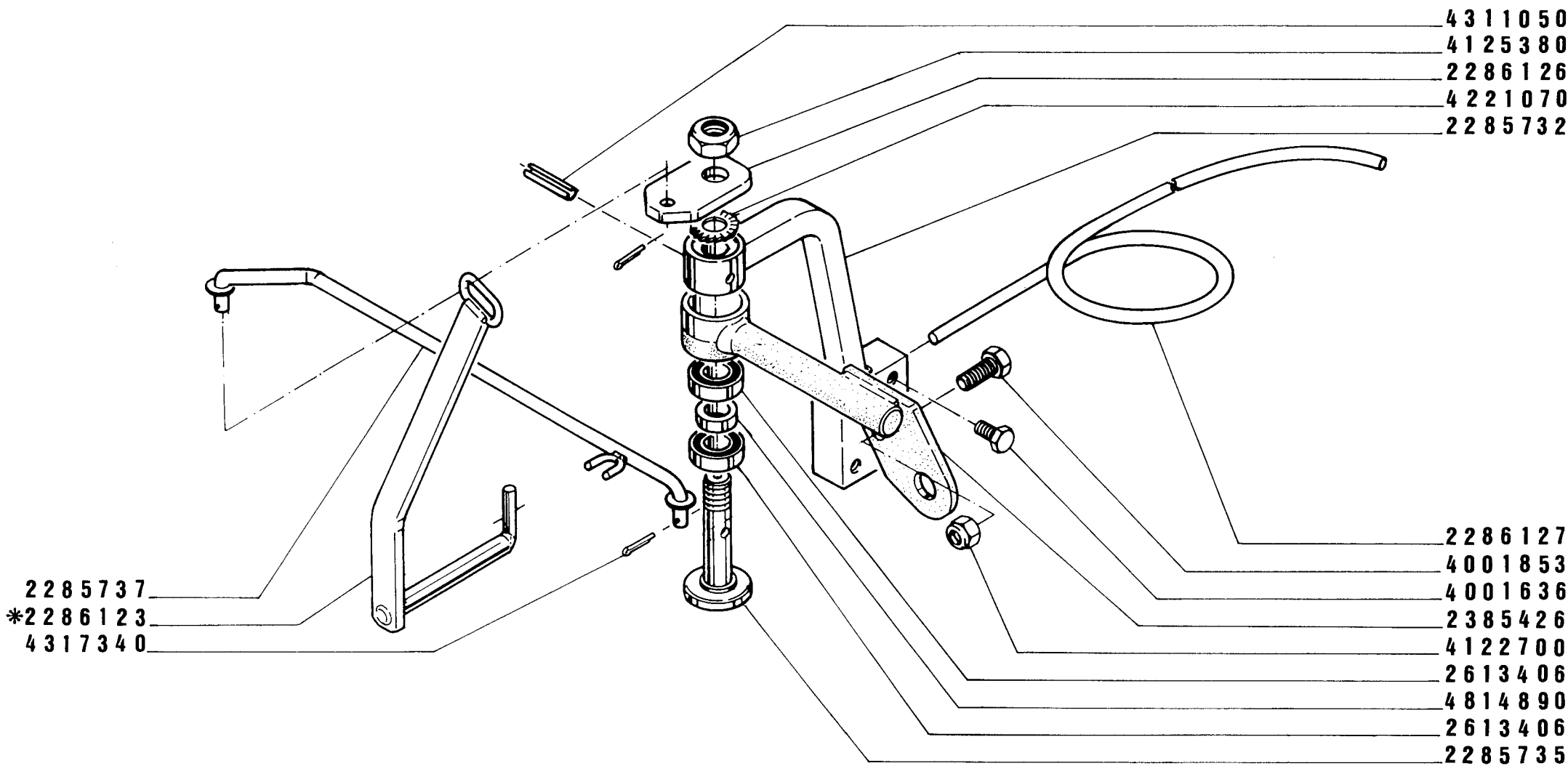
SERIE  
**V1-F1**

COD.

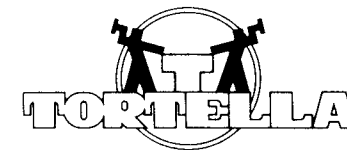
|            |  |  |
|------------|--|--|
| MODELLI    |  |  |
| V1 150-160 |  |  |
| F1 TUTTI   |  |  |

**TASTATORE COMPLETO**

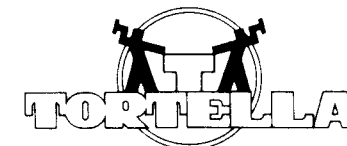
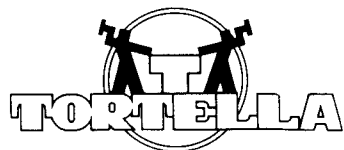
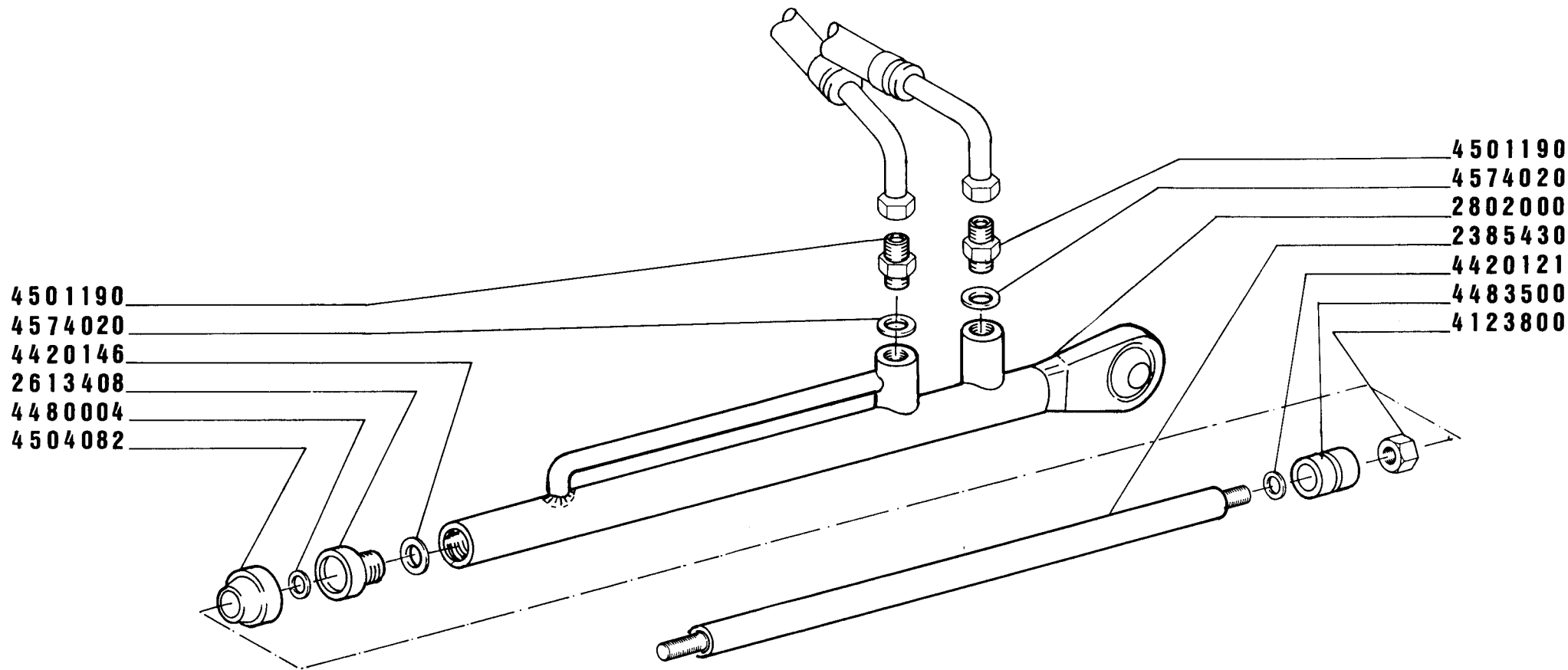
PAGINA N°  
**513**



1995402 PAG. 505 ESCLUSO\*

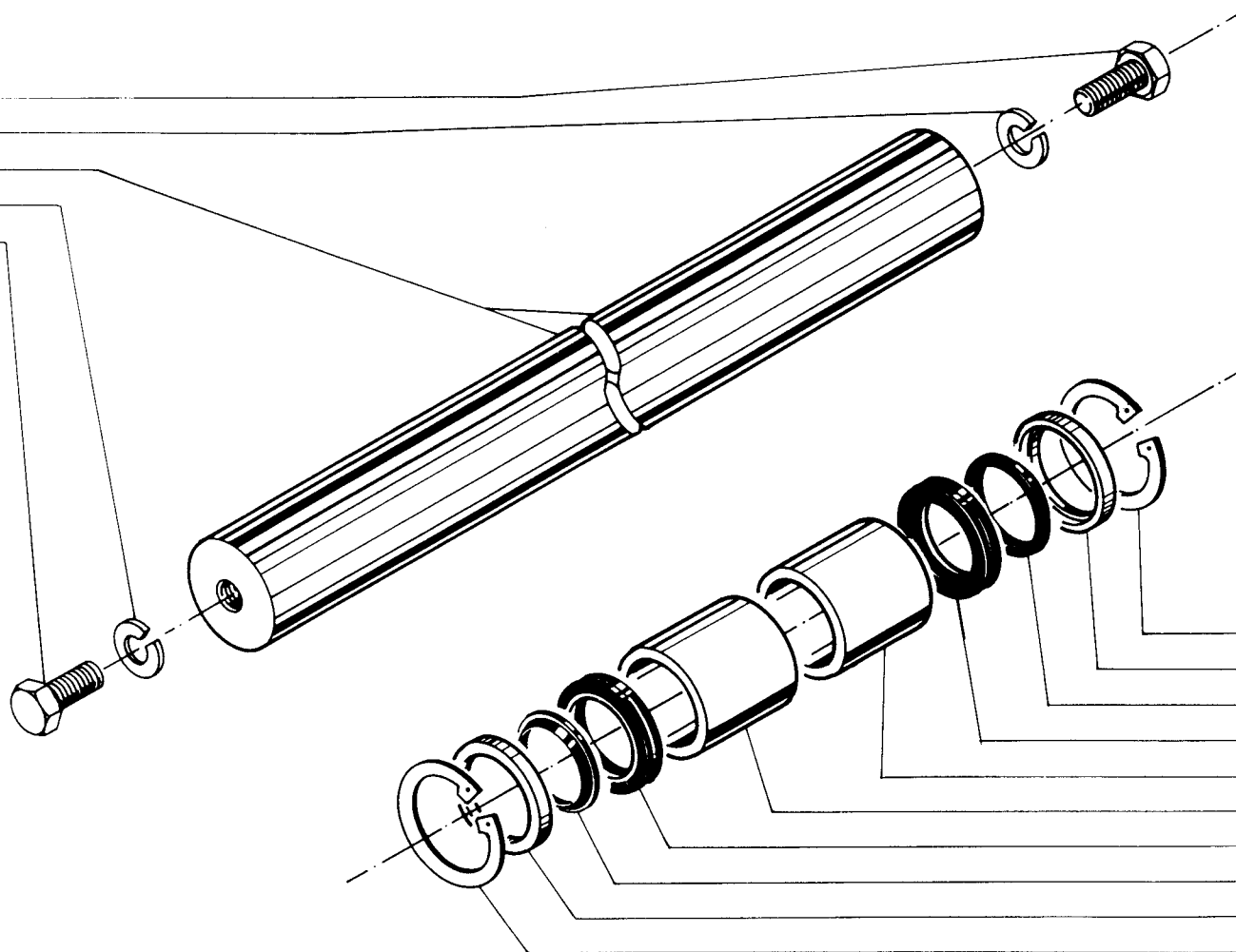


|                    |      |                            |                           |           |            |
|--------------------|------|----------------------------|---------------------------|-----------|------------|
| SERIE<br><b>V1</b> | COD. | MODELLI<br>da 110<br>a 140 | <b>TASTATORE COMPLETO</b> | PAGINA N° | <b>505</b> |
|--------------------|------|----------------------------|---------------------------|-----------|------------|

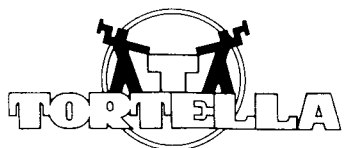


|                       |      |         |  |  |                         |
|-----------------------|------|---------|--|--|-------------------------|
| SERIE<br><b>V1-F1</b> | COD. | MODELLI |  |  | PAGINA N°<br><b>372</b> |
|-----------------------|------|---------|--|--|-------------------------|

4 0 0 2 7 1 6  
 4 2 1 1 1 6 0  
 2 3 8 6 8 2 0  
 4 2 1 1 1 6 0  
 4 0 0 2 7 0 8

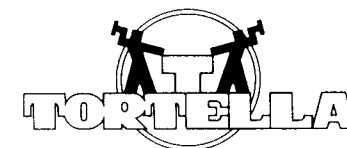
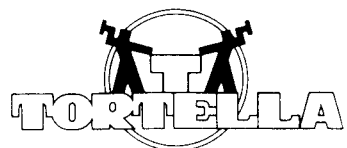
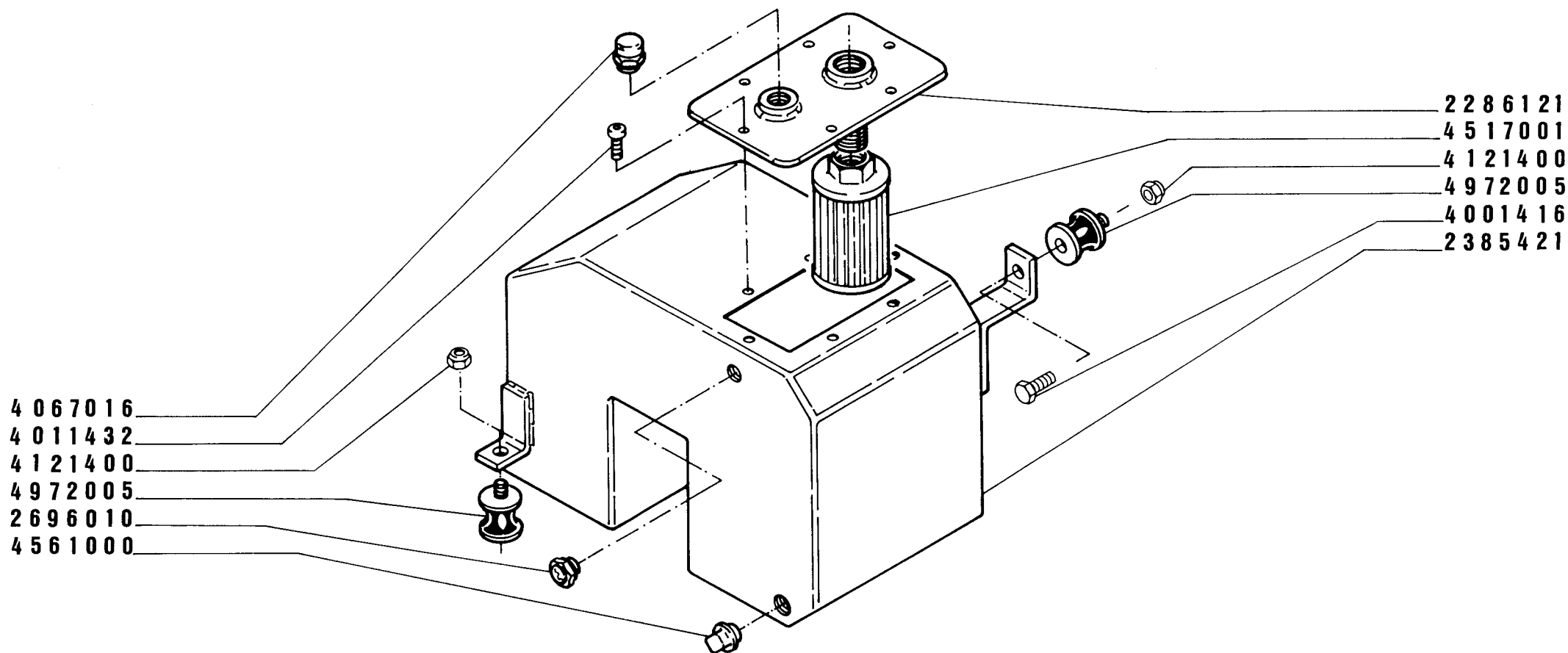


4 7 2 0 0 6 5  
 2 2 8 5 7 5 2  
 4 4 8 0 0 0 6  
 4 4 8 0 0 0 5  
 2 6 0 5 0 6 0  
 2 6 0 5 0 6 0  
 4 4 8 0 0 0 5  
 4 4 8 0 0 0 6  
 2 2 8 5 7 5 2  
 4 7 2 0 0 6 5

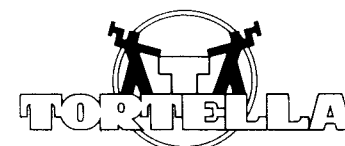
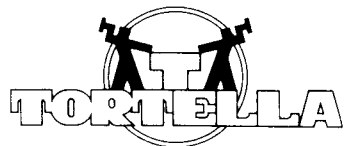
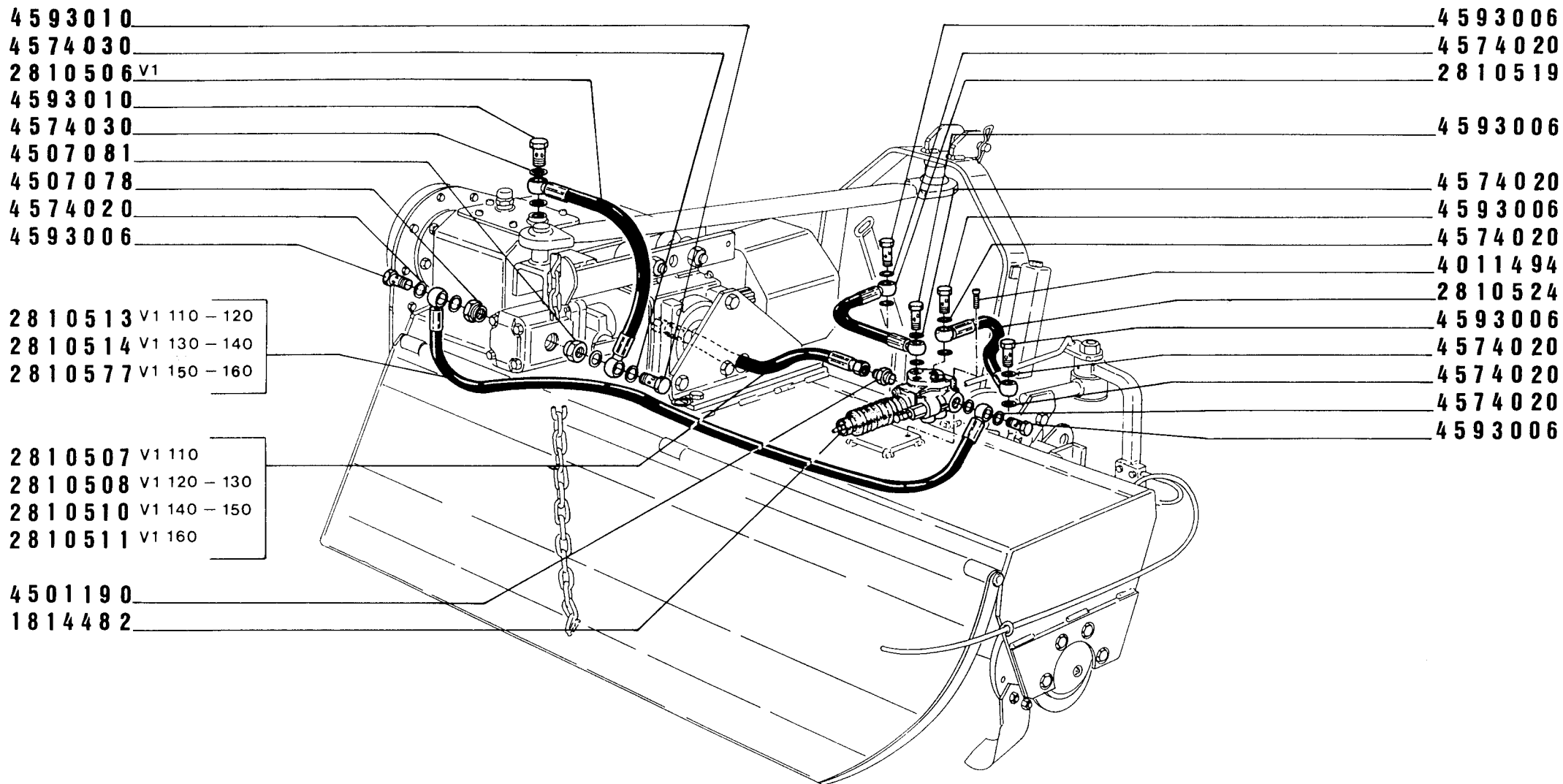


|                       |      |                  |              |                         |
|-----------------------|------|------------------|--------------|-------------------------|
| SERIE<br><b>V1-F1</b> | COD. | MODELLI<br>TUTTI | ASSE CROMATO | PAGINA N°<br><b>510</b> |
|-----------------------|------|------------------|--------------|-------------------------|

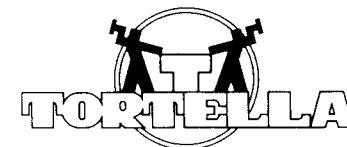
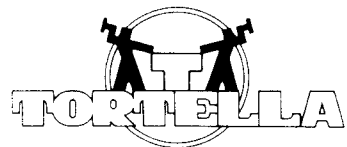
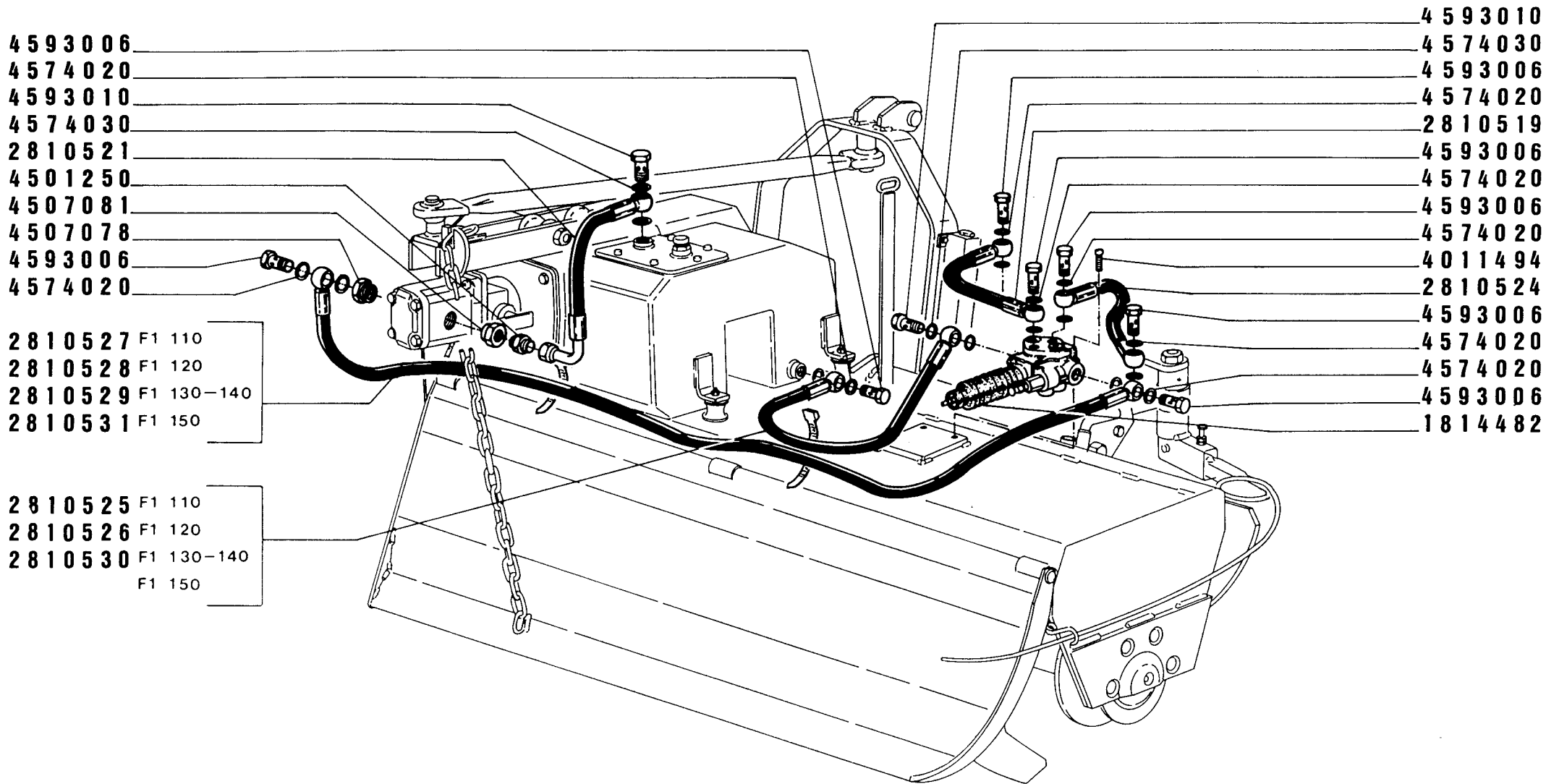




|                       |      |                  |                |                         |
|-----------------------|------|------------------|----------------|-------------------------|
| SERIE<br><b>V1-F1</b> | COD. | MODELLI<br>TUTTI | SERBATOIO OLIO | PAGINA N°<br><b>511</b> |
|-----------------------|------|------------------|----------------|-------------------------|



|                    |      |                  |                    |                         |
|--------------------|------|------------------|--------------------|-------------------------|
| SERIE<br><b>V1</b> | COD. | MODELLI<br>TUTTI | IMPIANTO IDRAULICO | PAGINA N°<br><b>512</b> |
|--------------------|------|------------------|--------------------|-------------------------|



|                    |      |                  |                    |                         |
|--------------------|------|------------------|--------------------|-------------------------|
| SERIE<br><b>F1</b> | COD. | MODELLI<br>TUTTI | IMPIANTO IDRAULICO | PAGINA N°<br><b>514</b> |
|--------------------|------|------------------|--------------------|-------------------------|